



HURRICANE PREPAREDNESS

Stay connected, make a plan, gather supplies.

 ready.nola.gov

 ready@nola.gov

 [@nolaready](https://twitter.com/nolaready)

 3-1-1

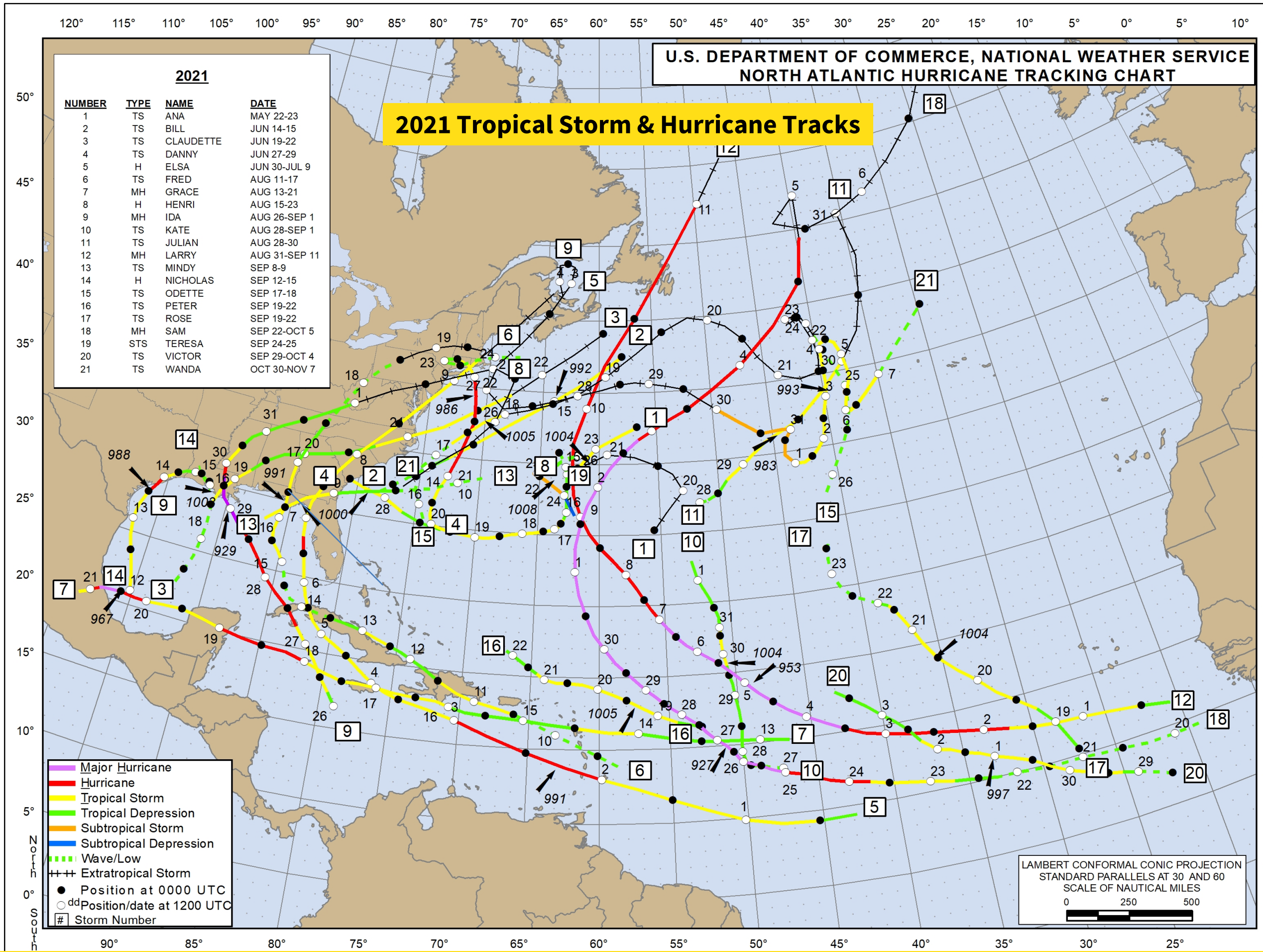
Hurricane Basics



Stay connected, make a plan, gather supplies.

2022 Hurricane Outlook

Forecast Parameters	Average for 1991-2020	NOAA 2022 Forecast
Named Storms	14	14-21
Hurricanes	7	6-10
Major Hurricanes	3	3-6



Stay connected, make a plan, gather supplies.

Measuring the Wind Strength of a Storm

MAJOR



39-73
MPH



Tropical Storm Claudette

New Orleans, LA

2021



74-95
MPH



Hurricane Barry

New Orleans, LA

2019



96-110
MPH



Hurricane Delta

Creole, LA

2020



111-129
MPH



Hurricane Zeta

New Orleans, LA

2020



130-156
MPH



Hurricane Ida

New Orleans, LA

2021



157+
MPH



Hurricane Maria

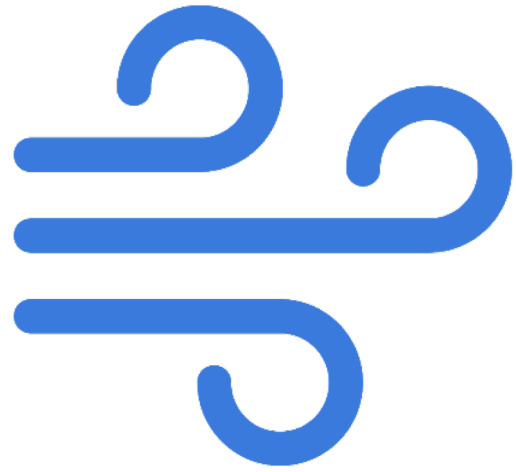
Puerto Rico, USA

2017



Stay connected, make a plan, gather supplies.

What are hurricane season's tropical weather hazards?



Damaging winds

- Insure for wind
- Inspect roof
- Prune trees
- Secure outdoor furniture
- Cover windows



Tornadoes

- Pay attention to watches & warnings



Flooding from rain

- Insure for flood
- Clear gutters & downspouts
- Clear catch basins
- Move property to highest floor
- Elevate home & utilities



Coastal flooding

- Pay attention to watches & warnings
- Elevate home & utilities



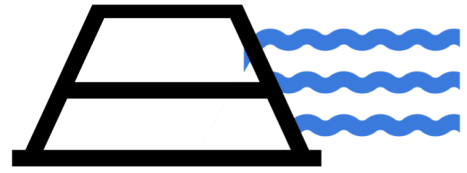
Stay connected, make a plan, gather supplies.

Community Preparedness



Stay connected, make a plan, gather supplies.

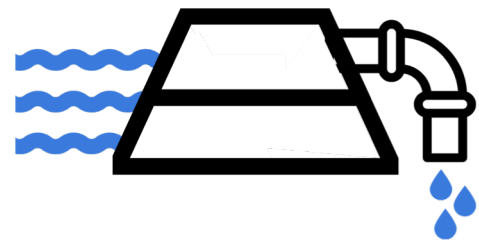
How New Orleans Combats Flooding



LEVEE SYSTEMS

U.S. Army Corps of Engineers

- Water is kept out of the City using a series of **natural and man-made surge barriers**.



PUMPING STATIONS

Sewerage and Water Board of New Orleans

- **Water is drained** through catch basins, **funneled to the pump stations** and then pumped into outfalls and Lake Pontchartrain.



GREEN INFRASTRUCTURE

Resilience NOLA

- **Green infrastructure and wetlands** reduce flooding by holding, absorbing, and slowing down rainwater.



Stay connected, make a plan, gather supplies.

Lake Borgne Surge Barrier



City of New Orleans Hurricane Plans

Emergency Plans & Operations in Place:

- Pre-Storm and Post-Storm Evacuation
- Emergency Resource Centers
- Shelters



Depending on the circumstances of each incident, these emergency plans may be activated to connect residents to essential services and keep them out of harm's way. Each plan prioritizes **inclusivity** and **accessibility**. **Services are FREE for ALL residents**, regardless of immigration status, identification, primary language, or functional needs.



Stay connected, make a plan, gather supplies.



Pre-Storm Evacuation

If a mandatory evacuation order is issued, the City of New Orleans will activate the **City-Assisted Evacuation Plan**.

- A mandatory evacuation order relies upon coordination with the state, national guard, and surrounding parishes.
- Ahead of a rapidly intensifying storm, we may have to condense our evacuation timeline.



Post-Storm Evacuation

If a hurricane causes major infrastructure damages, the City may operate a post-storm evacuation.

- This plan may be activated when there are significant delays or disruptions in public services or utilities.
- If you do not evacuate ahead of a major hurricane, prepared with your go-bag in case you need to evacuate after landfall.



**NOLA
READY**



Emergency Resource Centers (ERCs)

If residents need help accessing essential services, the City may open **Emergency Resources Centers (ERCs)** in affected neighborhoods.

- Emergency Resources Centers (ERCs) are designed to **provide residents access to information, community, and disaster resources.**



Shelters

If there is a need to shelter locally, the City has several **scalable sheltering options**.

- Shelters located in Orleans Parish may be **open to general or specific populations**, including unhoused populations and those with other specific medical needs.

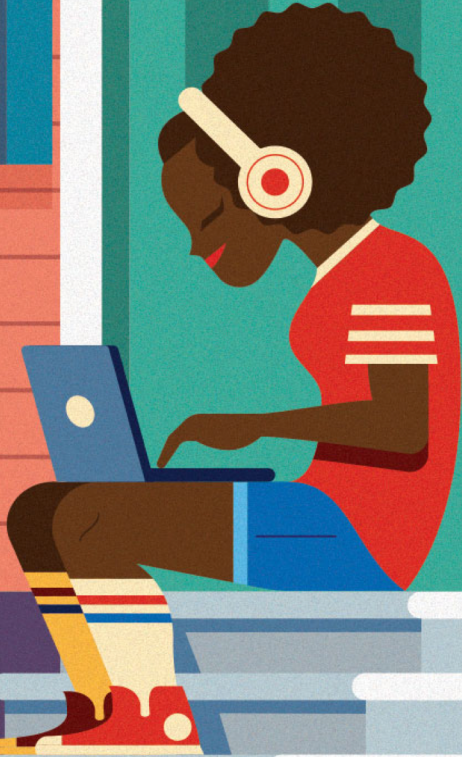


Personal Preparedness: Staying Ready Year-Round



Stay connected, make a plan, gather supplies.

Get flood insurance & get ready for rain



ready.nola.gov/rain



ready.nola.gov

**Emergency
preparedness is
as easy as 1-2-3**

1

STAY CONNECTED

2

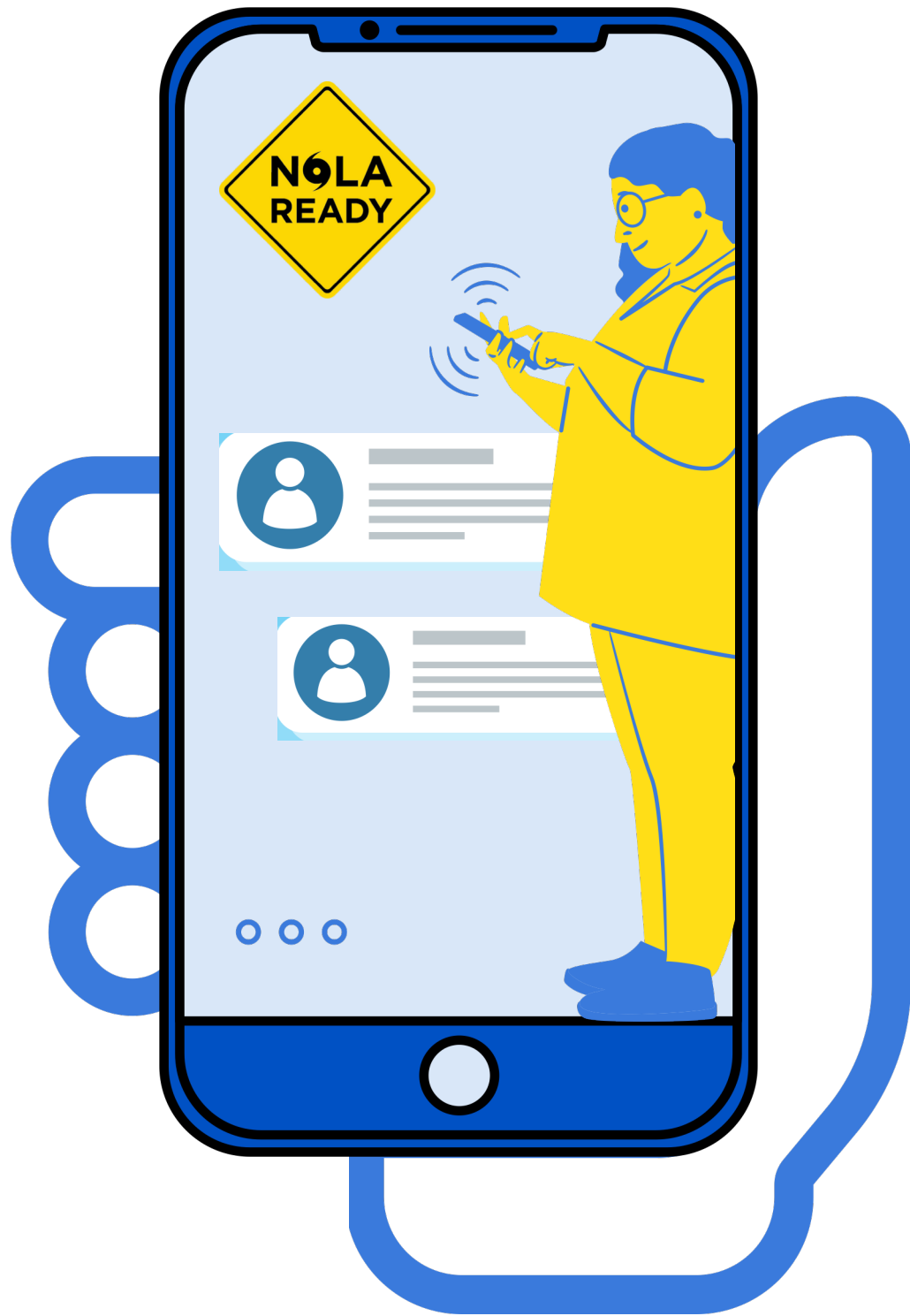
MAKE A PLAN

3

GATHER SUPPLIES



Stay connected, make a plan, gather supplies.



1 STAY CONNECTED

Know what's happening during hurricane season, and throughout the year too.



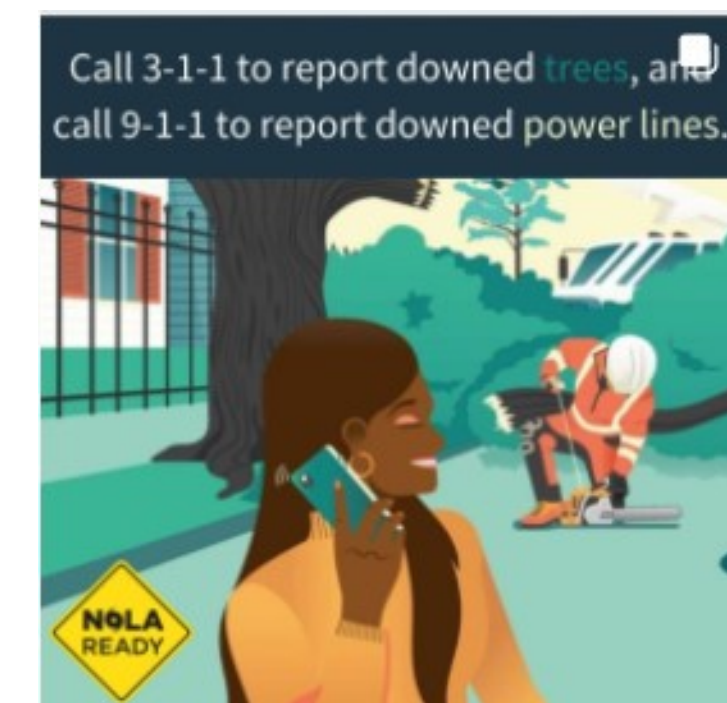
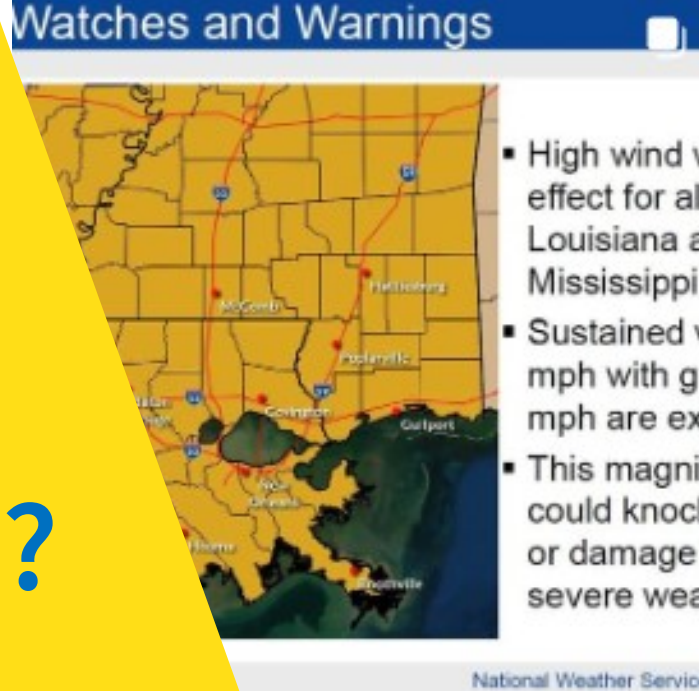
Text **NOLAREADY**
to **77295** for alerts

 ready.nola.gov

 [@nolaready](https://www.instagram.com/nolaready)

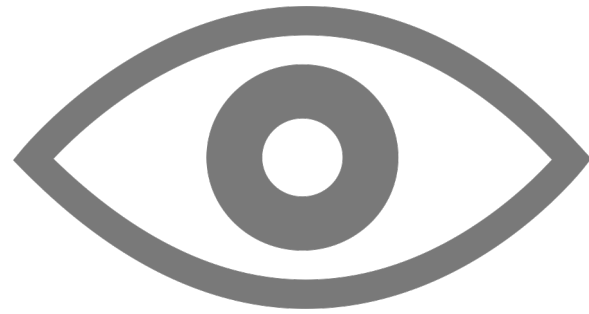
What type of info will you receive via emergency alert?

- Severe weather alerts
- Flood watches and warnings
- Neutral ground parking updates
- Boil water advisories
- Public safety incidents
- Hazardous material incidents
- Storm preparedness



Know the Difference Between:

Watches



A watch means there is a POTENTIAL for an emergency to occur in New Orleans.

EX: The National Weather Service has issued a tornado WATCH for Orleans Parish until 10PM. This means that there is potential for tornadoes in NOLA.

Warnings



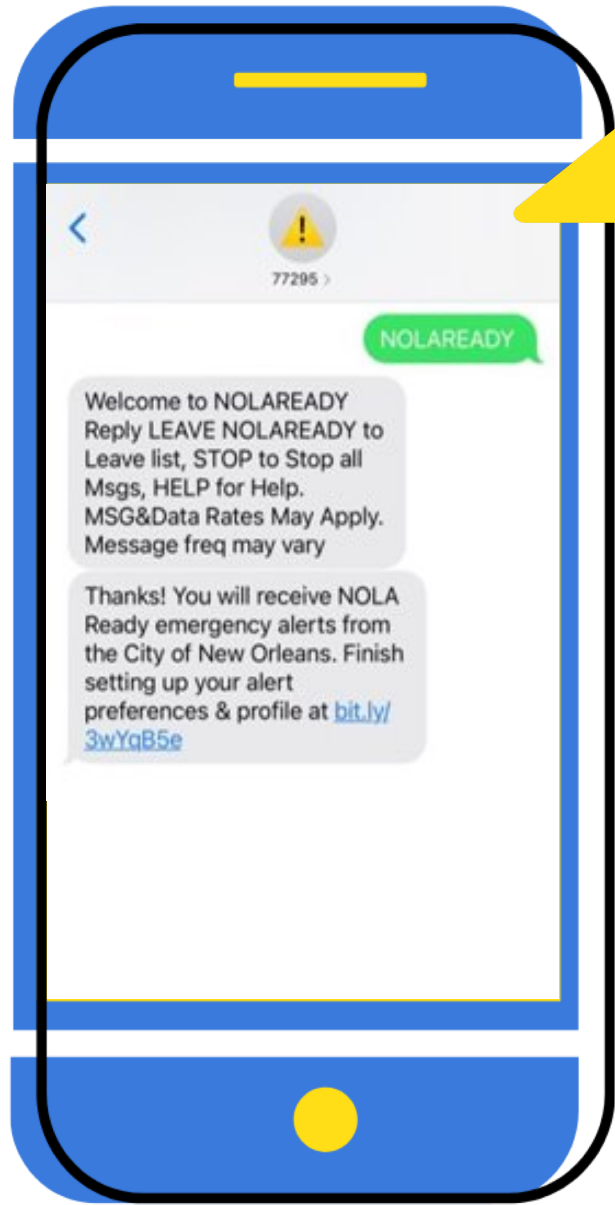
A warning means an emergency is currently HAPPENING in the area.

EX: If a tornado WARNING is issued, that means there is a tornado in the area and you should seek shelter immediately.



Stay connected, make a plan, gather supplies.

Sign-up for text alerts



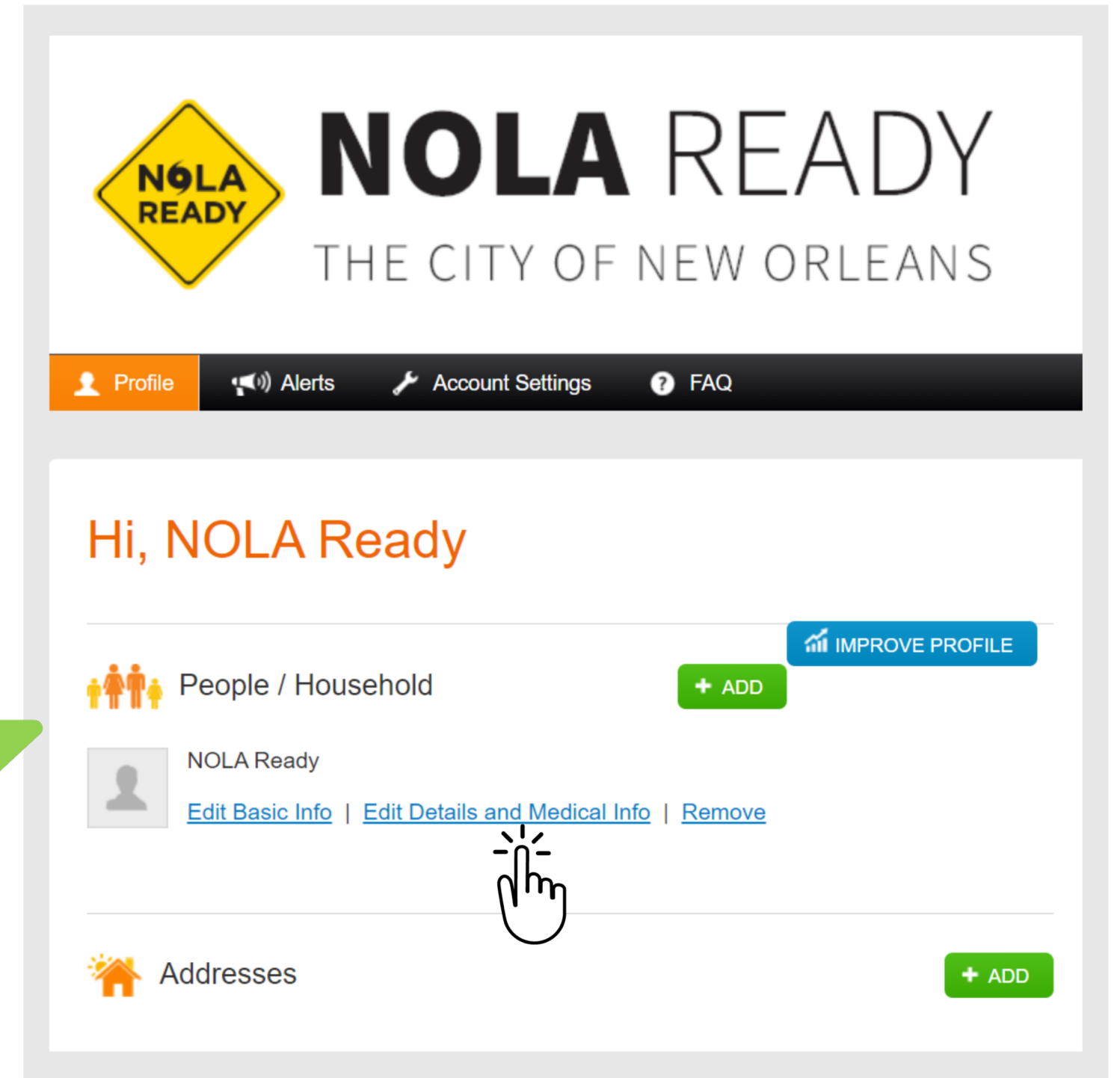
1



Text NOLAREADY to 77295 for alerts

2

Sign-up to get emergency alerts with **Smart911**



ready.nola.gov/alerts

How to create a Smart911 profile

- For more information on how to sign up for Smart911 visit:

 ready.nola.gov/alerts



Include your Smart911 health information

The screenshot shows the NOLA Ready Smart911 profile page. At the top left is the NOLA Ready logo. Below it is the text "NOLA READY THE CITY OF NEW ORLEANS". A navigation bar contains "Profile", "Alerts", "Account Settings", and "FAQ". The main content area starts with "Hi, NOLA Ready" and an "IMPROVE PROFILE" button. Below this are sections for "People / Household", "NOLA Ready" (with links for "Edit Basic Info", "Edit Details and Medical Info", and "Remove"), "Addresses", "Phones", "Emergency Contacts", and "Preferred Providers". Each section has a green "+ ADD" button. A hand cursor is over the "Edit Details and Medical Info" link. Three green callout boxes with arrows point to the "IMPROVE PROFILE" button, the "Addresses" "+ ADD" button, and the "Preferred Providers" "+ ADD" button.

Include ALL medical information

Add emergency contact information

Share preferred medical provider information

1. Include ALL medical information on your Smart911 profile, especially if you have a disability, or if you have mobility needs.

Identify a helper to assist you in creating a Smart911 profile.

Need assistance registering for Smart911? Call 3-1-1



2 MAKE A PLAN

Create and practice your plan so your family will know what to do in a crisis.



ready.nola.gov/plan



Stay connected, make a plan, gather supplies.

Know the Difference Between:

Voluntary Evacuation



All residents and visitors are encouraged to consider leaving as the forecasted conditions may be dangerous.

Consider your needs and the needs of your household when deciding whether you will evacuate.

Mandatory Evacuation



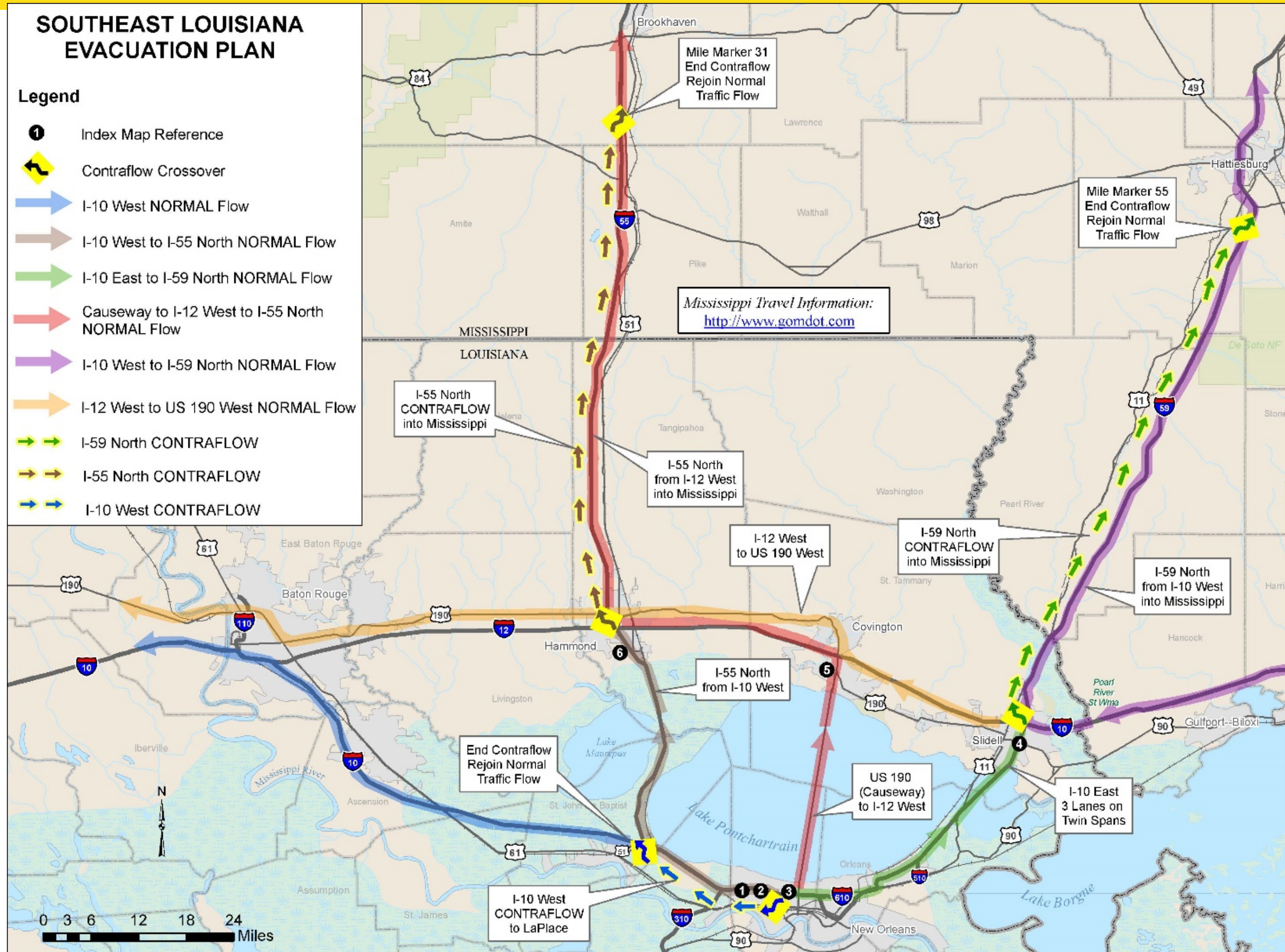
All residents and visitors must leave. The conditions will seriously endanger lives and threaten significant damage or destruction to property.

Public services and first responders will be suspended for some time, and there will be an imminent call to shelter in place.



Stay connected, make a plan, gather supplies.

What is contraflow?





3 GATHER SUPPLIES

Make sure you have the supplies you may need during an emergency or disaster.



ready.nola.gov/gather-supplies



Stay connected, make a plan, gather supplies.

Gather Supplies



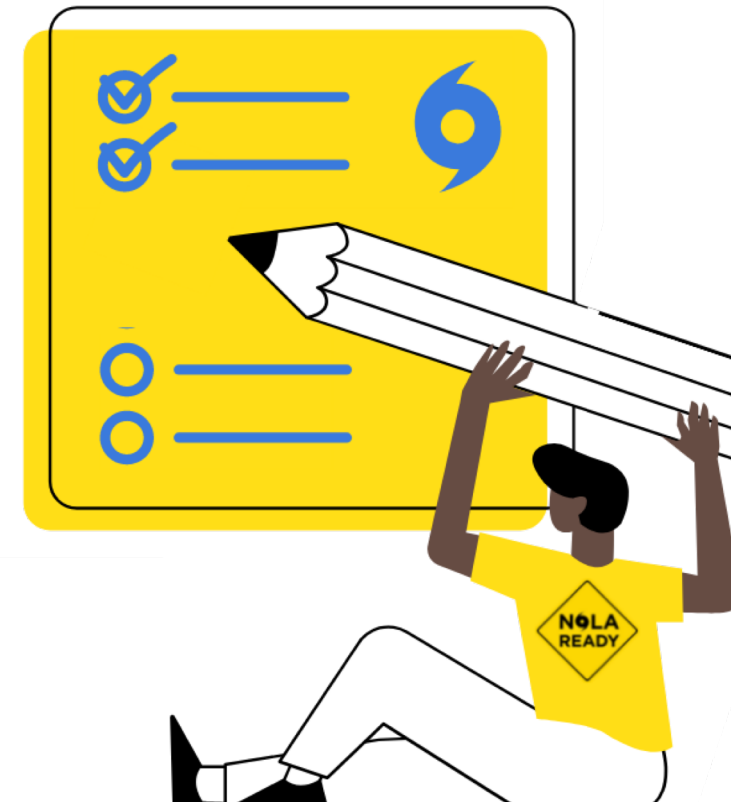
Make a "go bag"

- ID, birth or marriage certificate
- Cash
- Emergency contacts
- Medical records & insurance policies
- Documents proving residence
- Medications
- First aid kit
- Radio, flashlight, batteries
- Clothes, toiletries, bedding
- Pet supplies



Make a "home kit"

- 3 days of non-perishable food
- 3 gallons of water per person
- First Aid Kit
- 1 to 2+ week supply of medications
- Flashlight, radio, batteries
- Matches or lighter
- Pet supplies
- Books & games



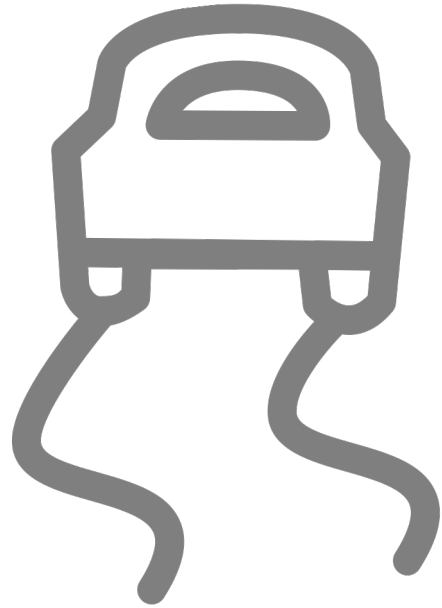
Ready.nola.gov/gather-supplies

After a Hurricane



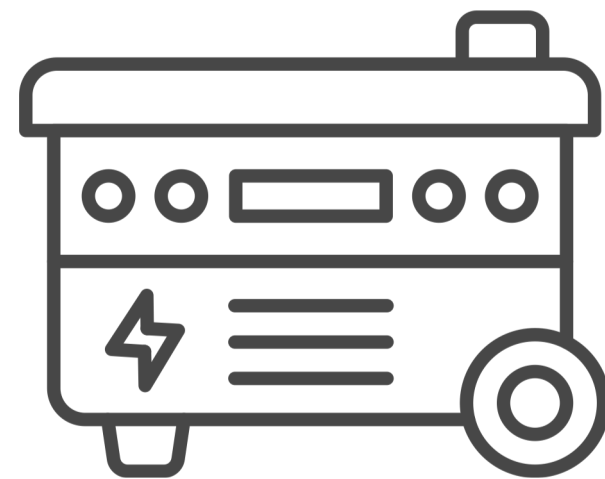
Stay connected, make a plan, gather supplies.

Here are some tips for power outages



STAY SAFE ON THE ROAD.

- Watch out for downed power lines.
- If a traffic light is out, treat the intersection as a four-way stop.



USE GENERATORS SAFELY.

Follow the **20-20-20 rule**:

- 20 feet away from the house.
- 20 mins of cool down before refueling.
- \$20 for a carbon monoxide alarm.



ready.nola.gov/power-outage

More tips for power outages



PRACTICE FIRE SAFETY.

- **Use flashlights, not candles.**
- **Keep generators outside your home.**
- **Stay away from downed power lines.**



PRESERVE DEVICES AND APPLIANCES.

- **Preserve cell phone battery life.**
- **Keep fridge doors closed. Most refrigerated food will keep in a closed refrigerator for several hours.**
- **Disconnect appliances, equipment, or electronics.**



Get Involved

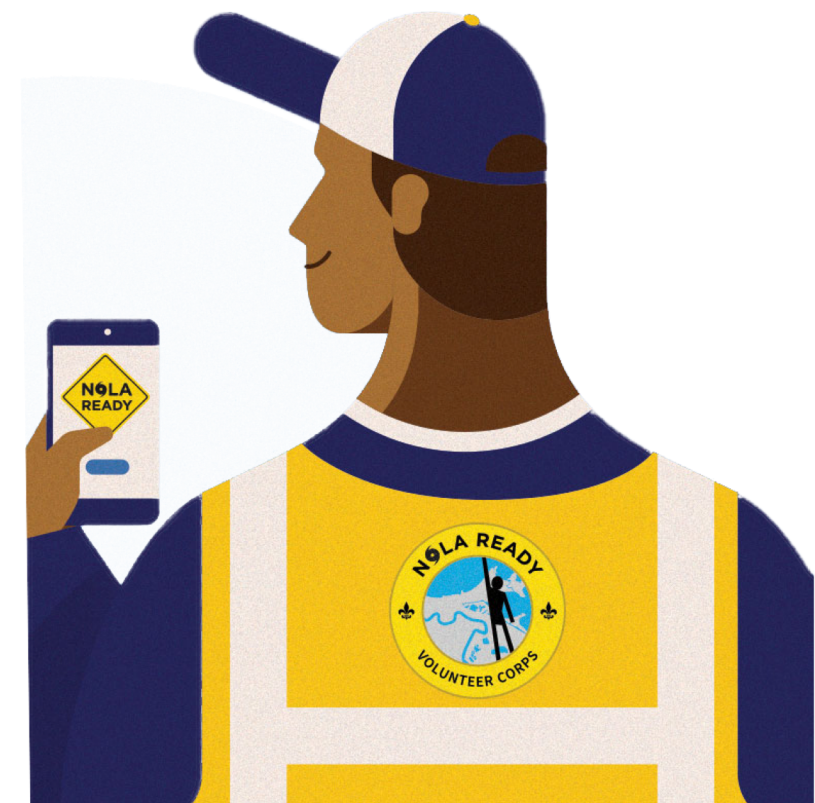


Stay connected, make a plan, gather supplies.

Train Up or Volunteer!

Join the NOLA Ready Volunteer Corps and help your neighbors during emergencies.

 ready.nola.gov/volunteer



NOLA Ready Trainings Available

Request a FREE training at

 ready.nola.gov/training

- ✓ Active Shooter Preparedness
- ✓ Bystander Response Training
- ✓ Stop the Bleed
- ✓ Overdose Prevention
- ✓ Hands-Only CPR
- ✓ Hurricane Preparedness
- ✓ Business Continuity



Stay connected, Plan for Emergencies, Gather Supplies.




Questions?

 ready.nola.gov

 ready@nola.gov

 [@nolaready](https://twitter.com/nolaready)

 3-1-1